

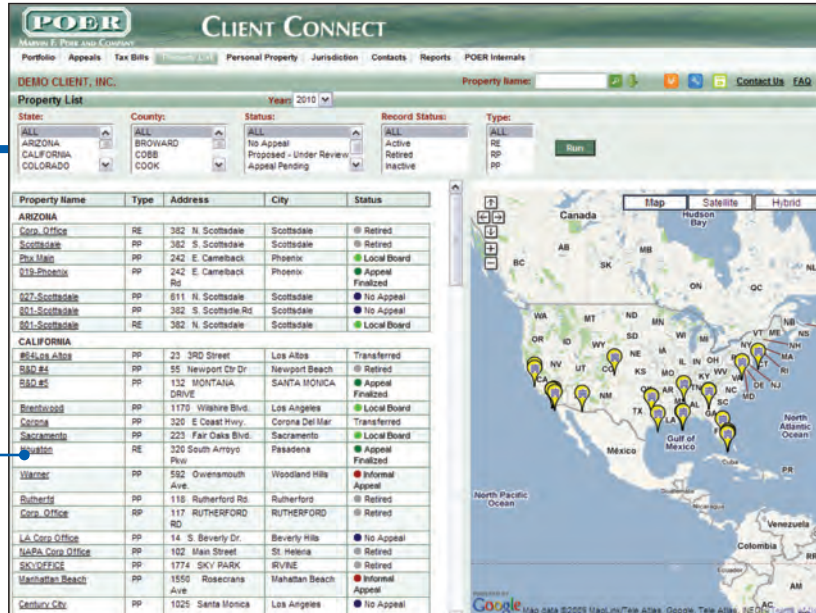
Access every detail of your properties represented by POER, from a general list to full year-by-year tax histories.

In-depth information and analysis at your fingertips for your real estate properties beginning with a master property list to value analysis, appeal data, historical tax information and more for each property in your portfolio.

More than a dozen views at your fingertips!

Property List View

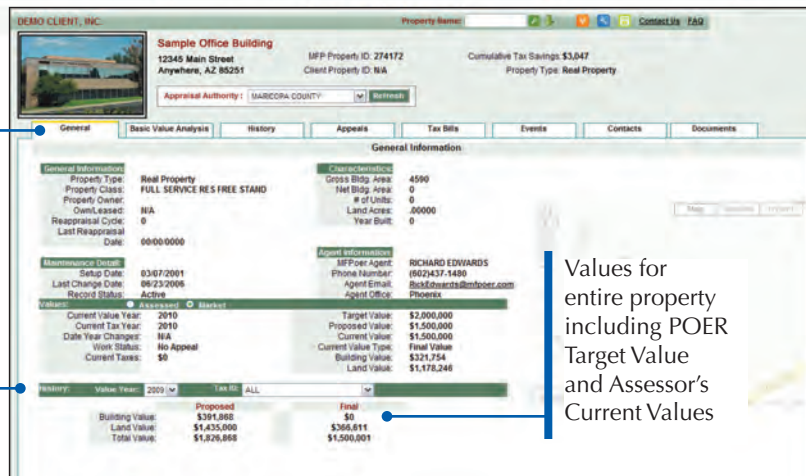
Displays a list of all your properties. Filter by any combination of State; County; Work Status; Record Status; Property Type



Click on the **Property Name** and drill down to further detail on the Property Common View



Tabs: Provide shortcuts & flexibility to access every conceivable detail about each location's property taxes



Property Common View
Detailed tax data for each specific property

Values for entire property including POER Target Value and Assessor's Current Values

Full Tax History by Year: Select the year you want to view

Property History Dashboards

Graphically view and drill down to details relating to Values, Tax Savings, Year-over-year changes

